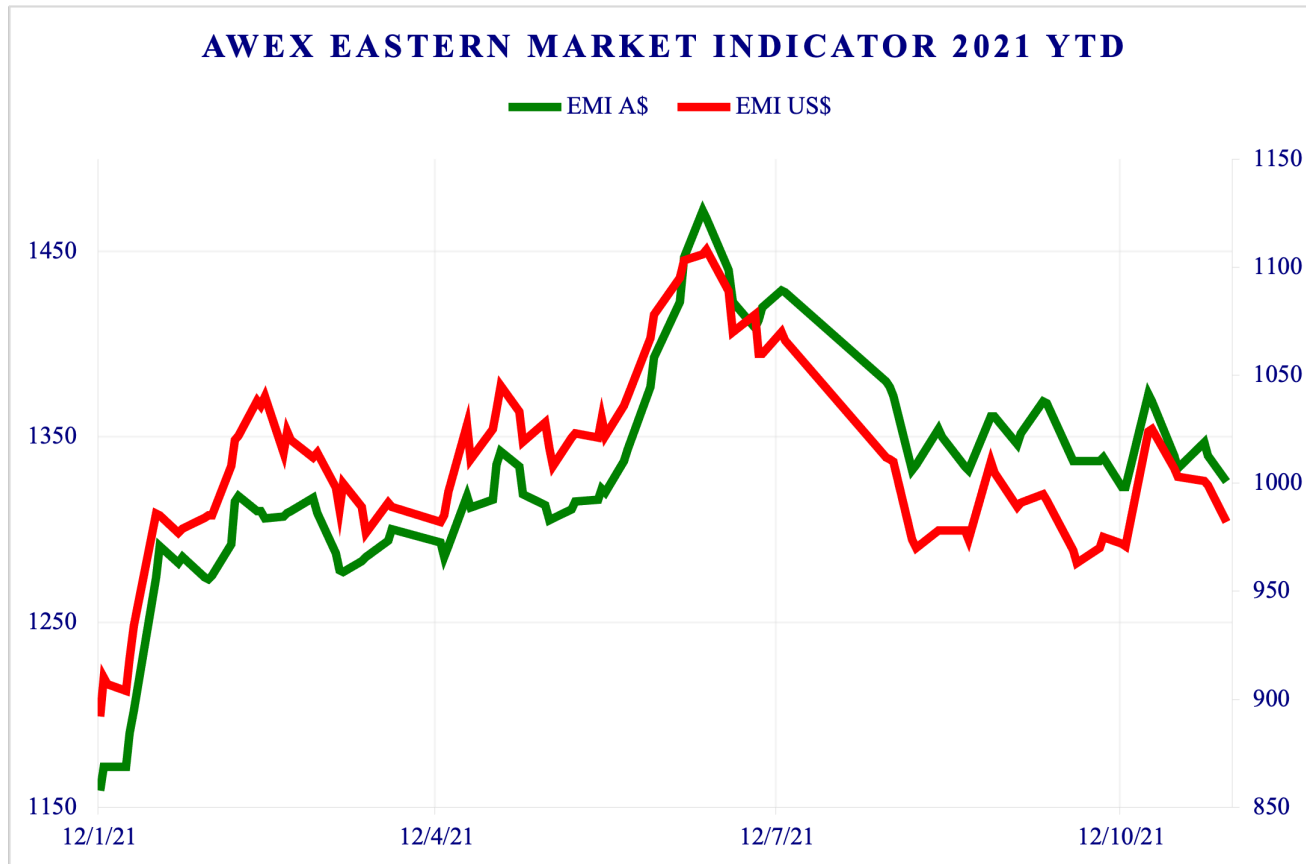


Wool into 2022

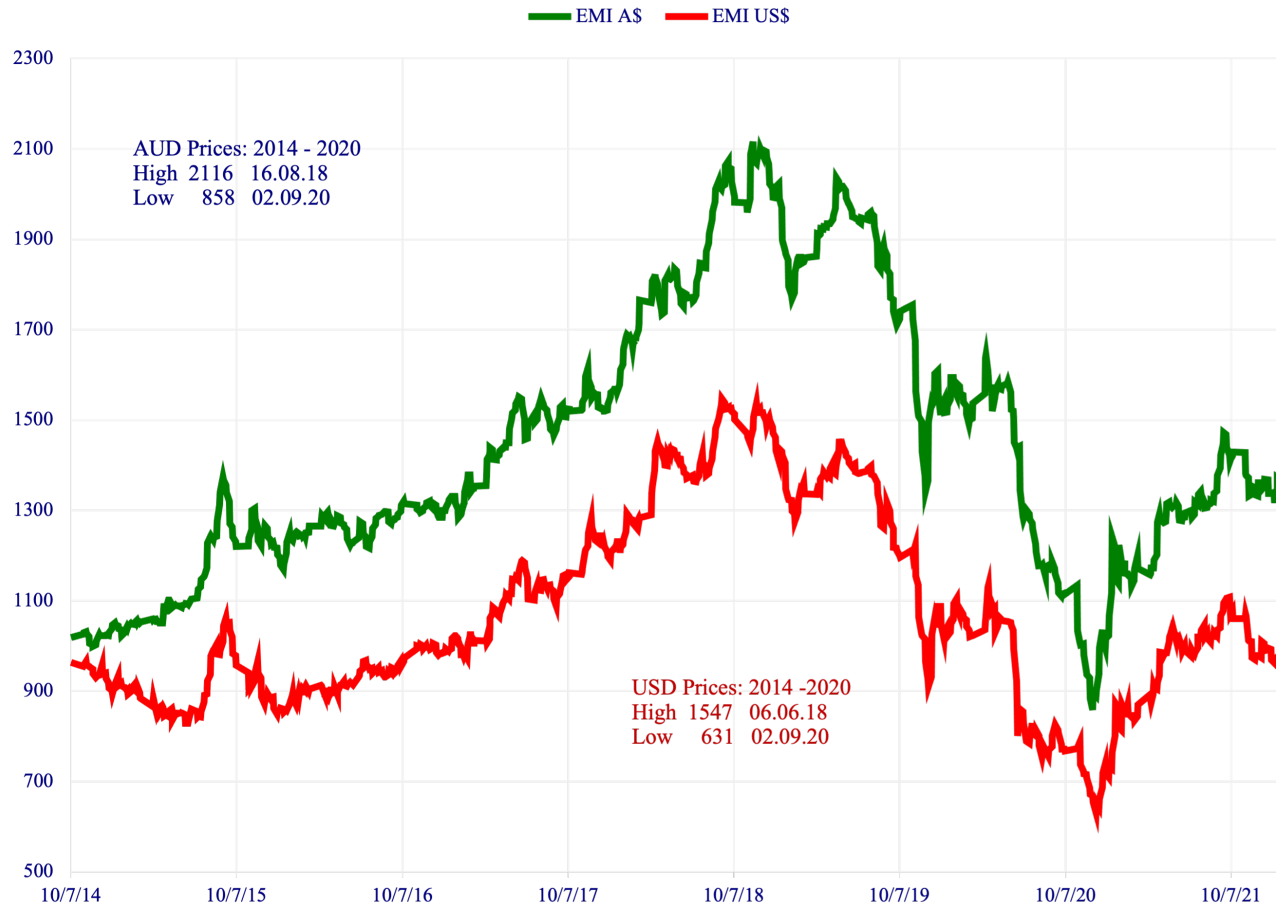
AAAC – OUTLOOK 21

Scott Shenton Wool Agency CPL

2021 Year To Date

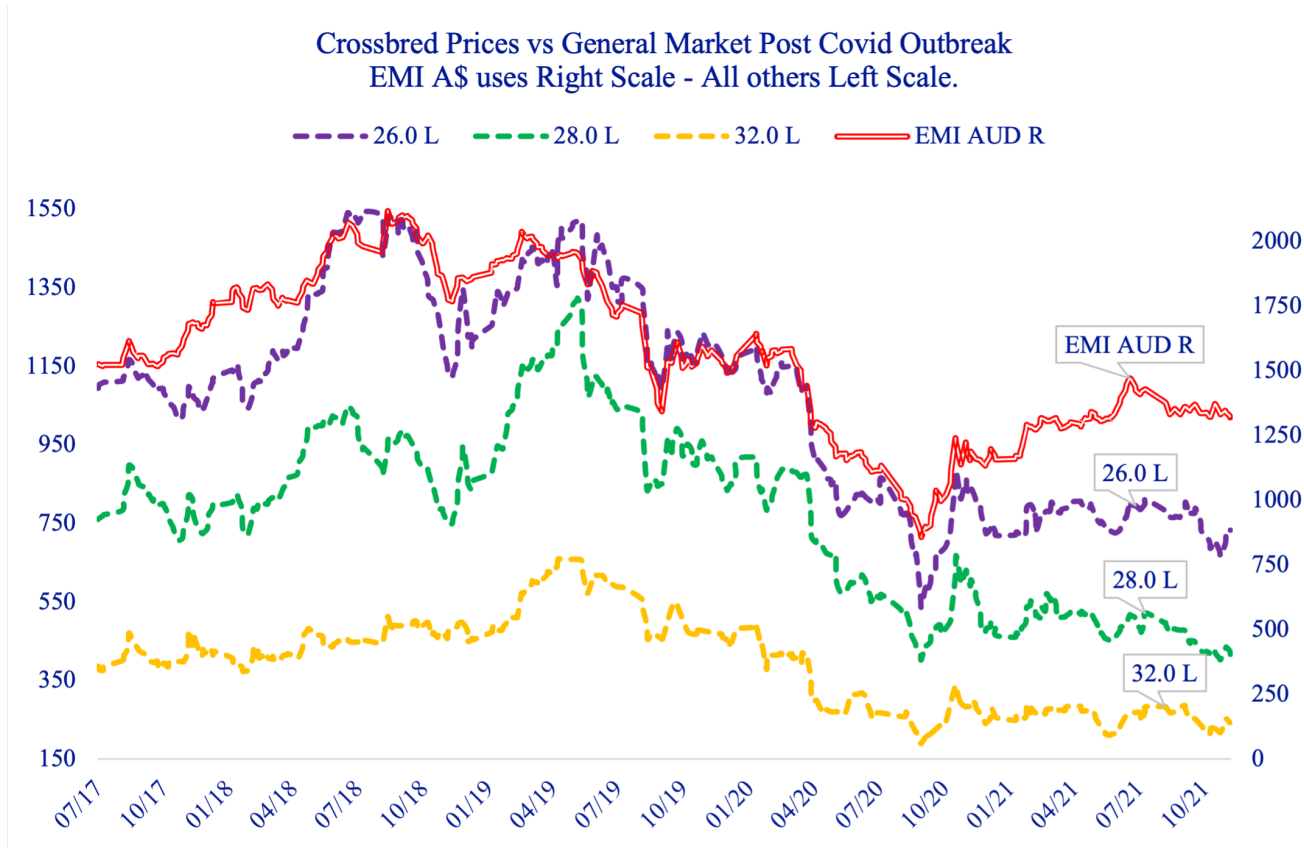


AWEX EASTERN MARKET INDICATOR 2014 TO 2021

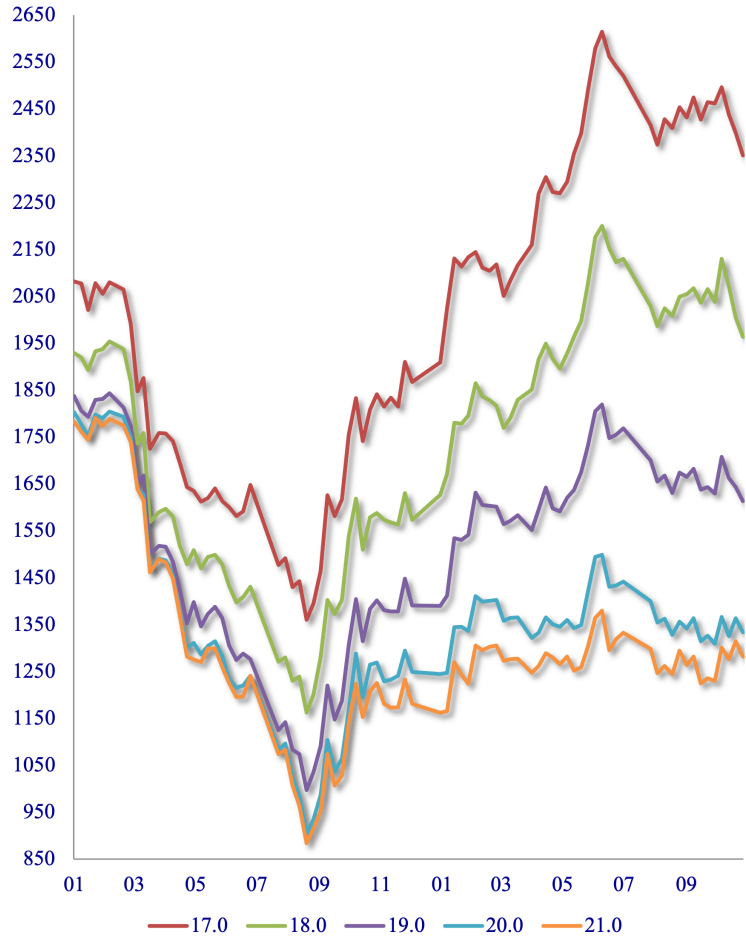


2014
To
2021

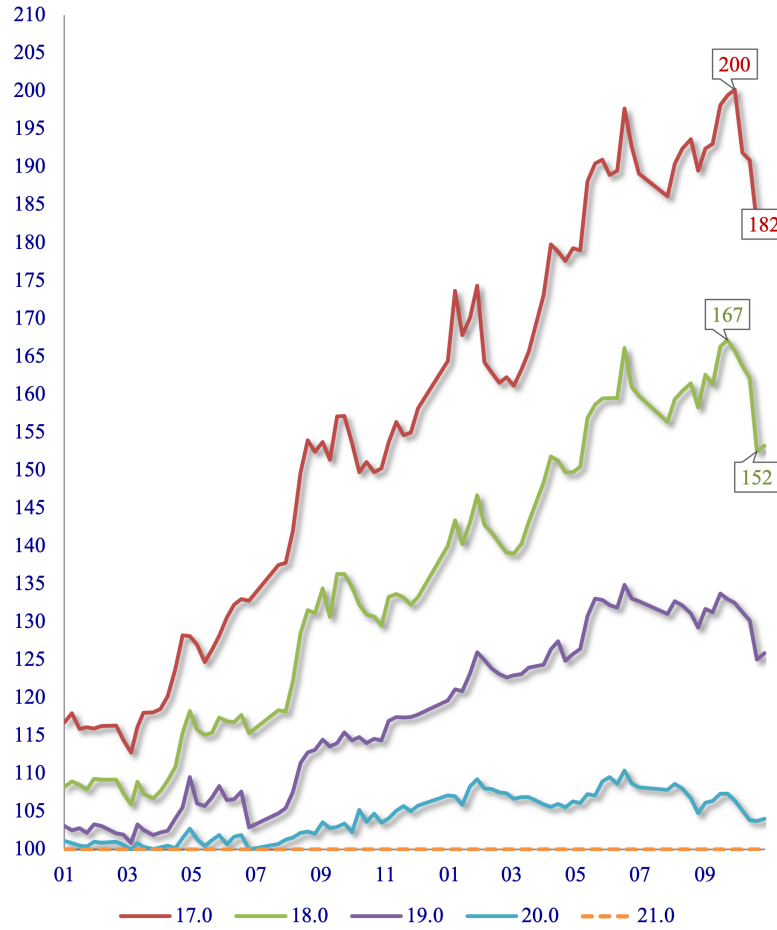
Crossbred Combing



AWEX Micron Price Guides - From January 2020 Week Close: Average of Northern & Southern markets

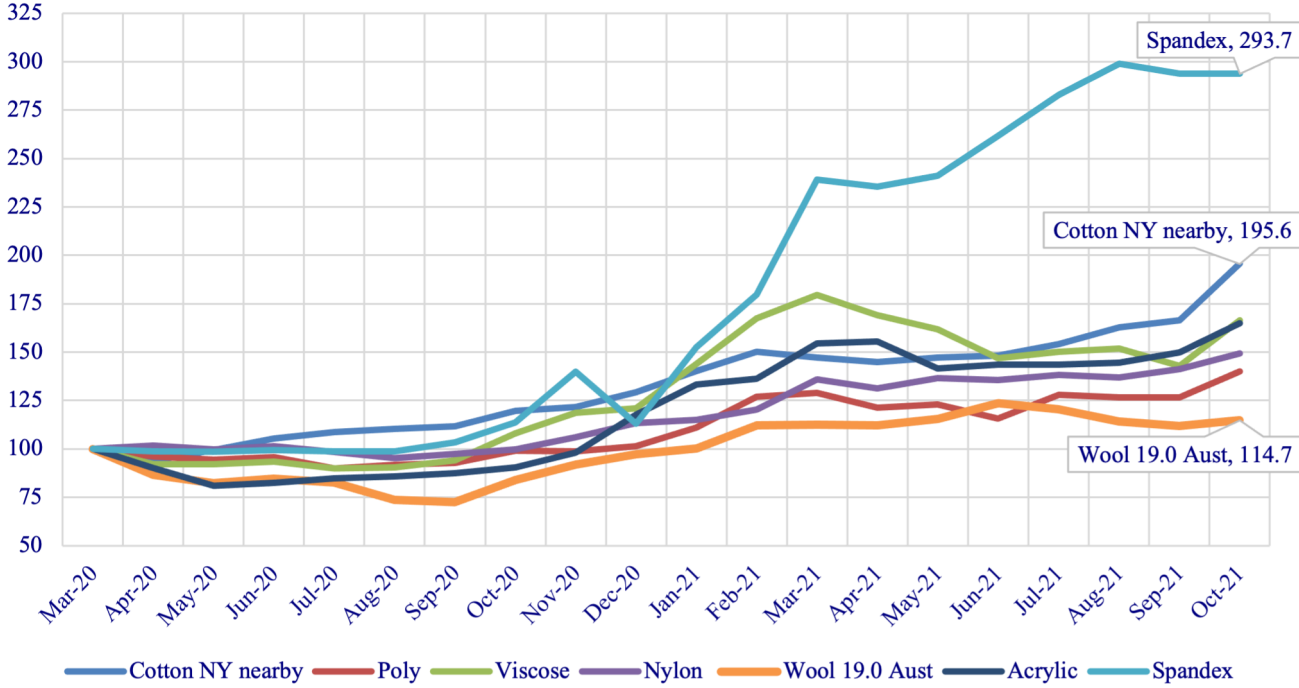


Micron Spreads - AWEX MPG's
Base 21.0 Micron mpg = 100.



MPG
2020
to 2021

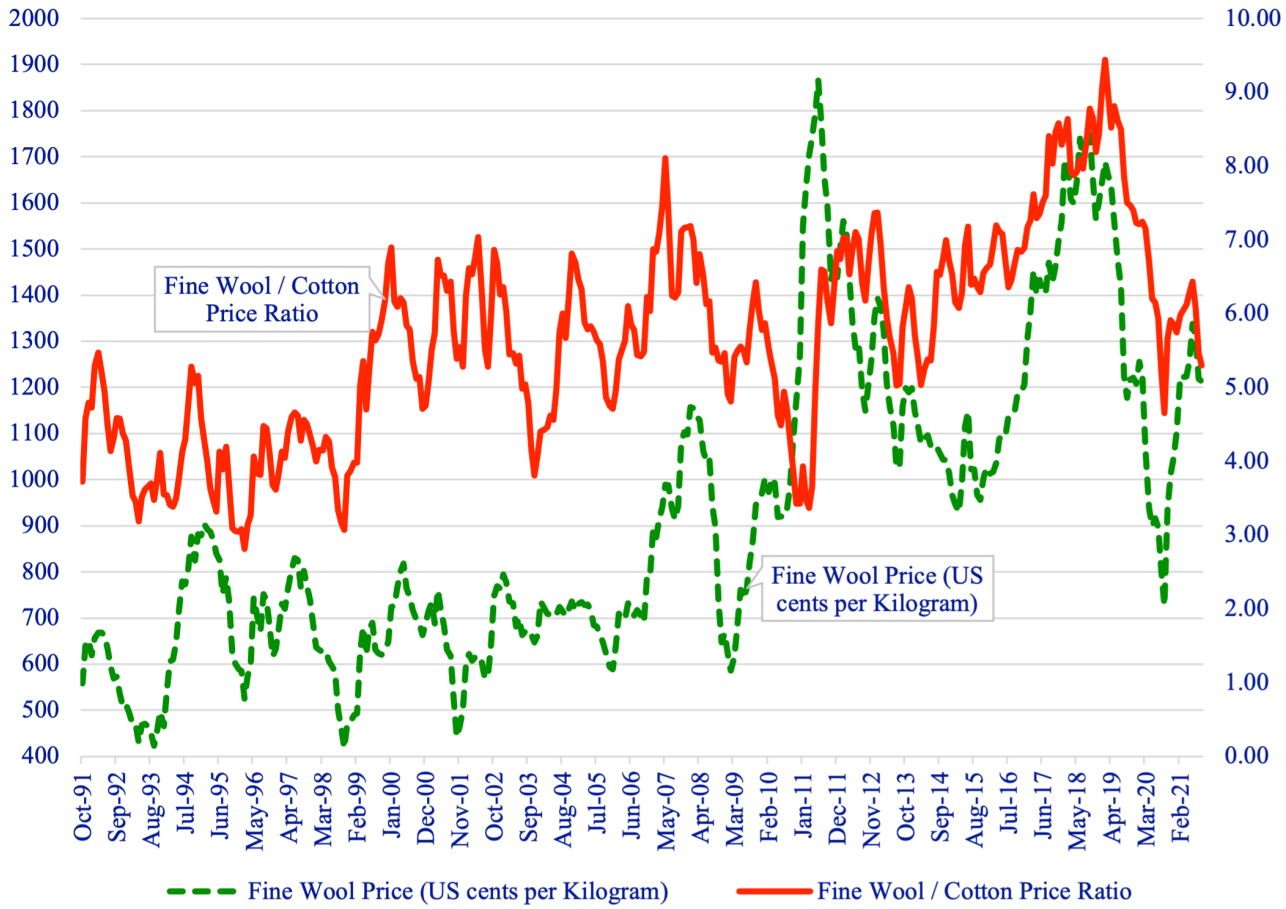
Fibre Price Trend Comparison USD Base 100 = March 2020 Monthly Ave and Current.
 Source: Emerging Textiles



Price Trends – Comparative Fibres

Source: Emerging Textiles

Cotton Ratio [19.0 Wool] USD



Cotton Ratio USD

Source: AWEX data IMF data

Ongoing Issues for Trade

Covid-19 Delta – Management of, and Ongoing Lockdowns

China – As our Major Processor and Major Consumer

High Volatility - Shipping of Raw Wool – Difficult Trade Environment

Logistics – Final Product to Wholesaler/Retailer

Rising Costs related to increases in Energy/Labour for Processors. Push back on Raw material Costs

Changes in Consumer Confidence and Purchasing Patterns – return to Work

We will get there; it may just take a little longer.